

CANDLELIGHT FOREST WYES

SECTION ONE

A SUBDIVISION OF 13.1157 ACRES OUT OF
THE SAMUEL LEWIS SURVEY, ABSTRACT-510
HARRIS COUNTY, TEXAS

41 LOTS

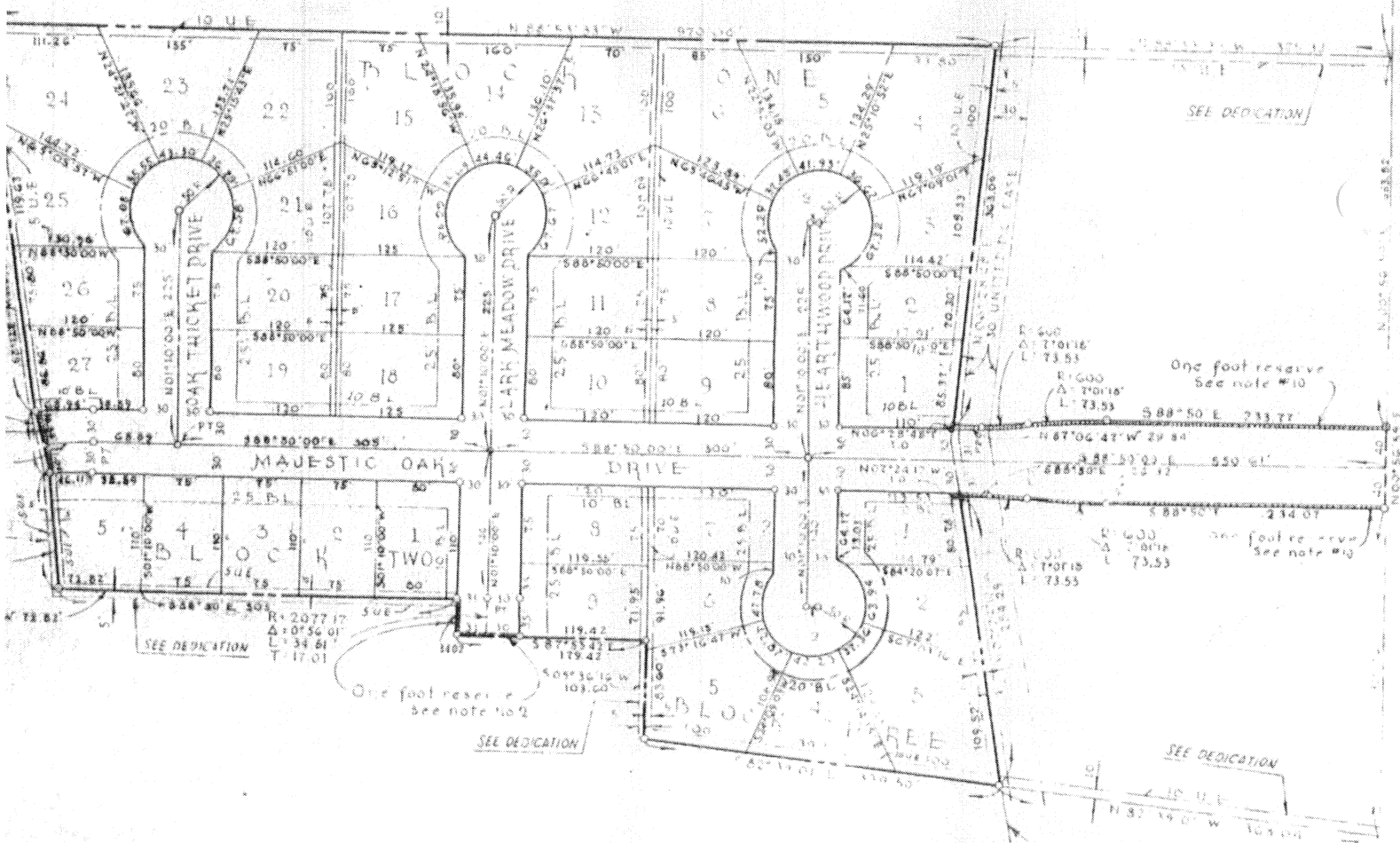
DATE: DECEMBER 1, 1969

3 BLOCKS

SCALE: 1" = 100'

OWNER: T. D. GARDNER

ENGINEER: IRVING L. PEABODY, ENGINEERS, INC.



GENERAL NOTES ~

are either expanded or or racial to streets
less otherwise noted.

reserves as indicated to the public in fee as a
ration between the side or end of streets
on plats where such streets abut adjacent

CANDLELIGHT FOREST WYES

SECTION TWO

subdivision of 10.253 acres out of the Samuel Lewis survey, abstract-510, Harris County, Texas.

38 Lots

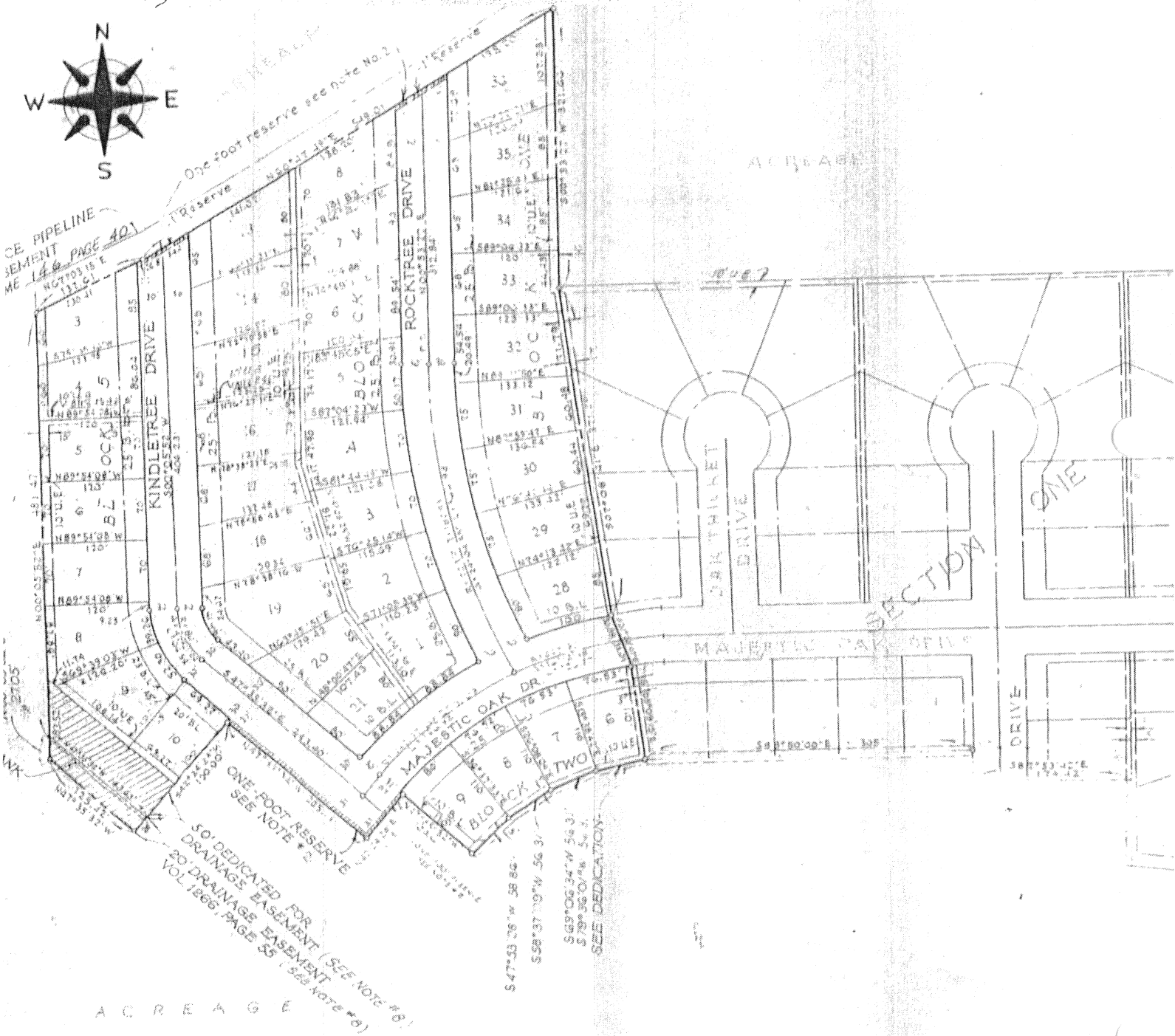
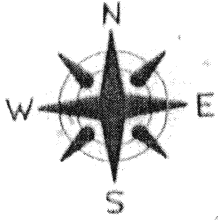
4 Blocks

July 1, 1970

Scale: 1"=100'

Owner: J.D. Gardner

Engineer: Irving L. Peabody, Engineers, Inc.



General Notes

Lot lines are either perpendicular or parallel to street frontage.

Key Map
Not to scale

KINDLE LIGHT FOREST WEST

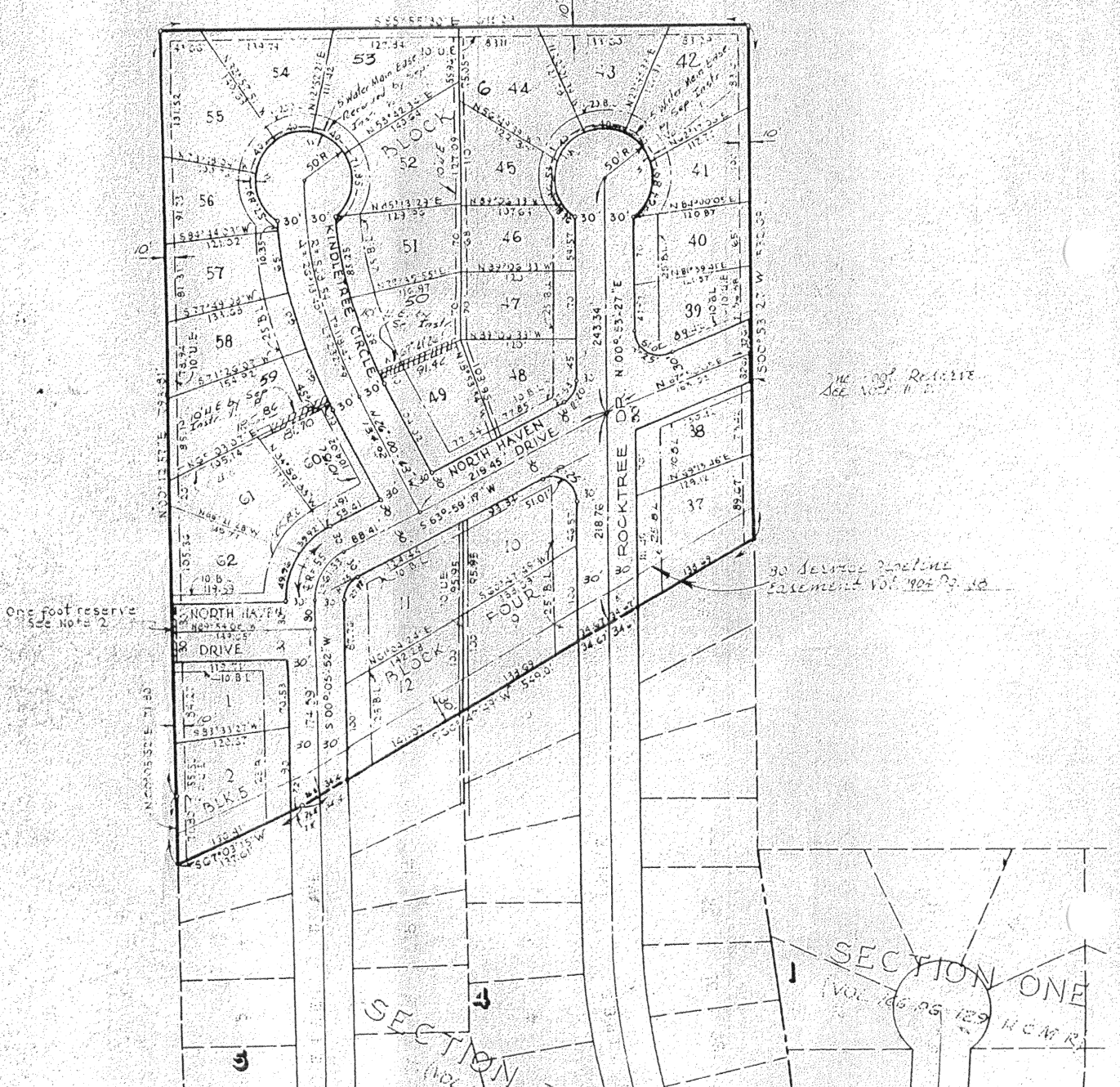
SECTION THREE

A subdivision of 11.5245 acres out of the Samuel Lewis survey, abstract-510, Harris County, Texas.

33 Lots
 Sept. 7, 1970

3 Blocks
 Scale: 1"=100'

Owner: J.D. Gardner
 Engineer: Irving L. Peabody, Engineers, Inc.



CANDLELIGHT FOREST WEST

SECTION FOUR

A subdivision of 9.823 acres out of the same land survey, abstract-510, Harris County, Texas.

40 Lots
2 Reserved

January 1971

3 Blocks
Scale: 1" = 10'

Owner: J. D. Gardner

Engineer: Irving L. Peabody, Engineers, Inc.

